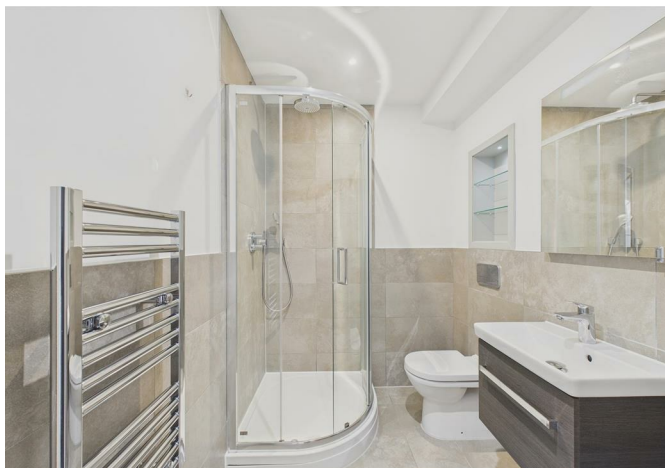
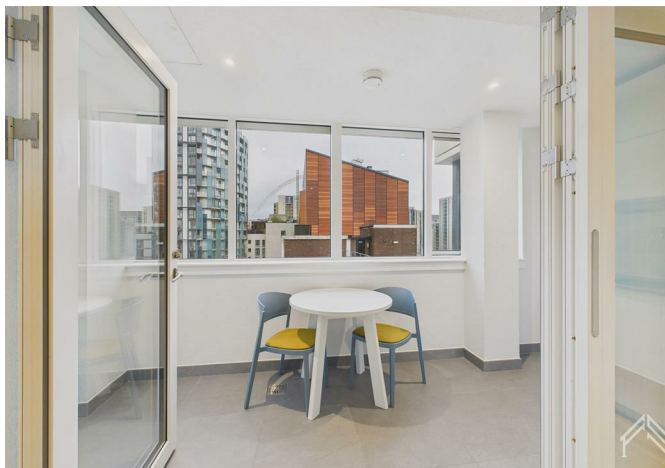


5423532422 1A Olympic Way, Wembley Park, HA9 0PL
£1,695 Per month





5423532422 1A Olympic Way, Wembley Park, HA9 0PL

£1,695 Per month

LIMITED OFFER | LOW DEPOSIT OPTION | 2 MIN WALK TO WEMBLEY PARK STATION.

Better than you imagined. Thoughtfully designed living space in the heart of Wembley Park with iconic views of Wembley Stadium. This is one of those apartments that genuinely surprises you the moment you walk in.

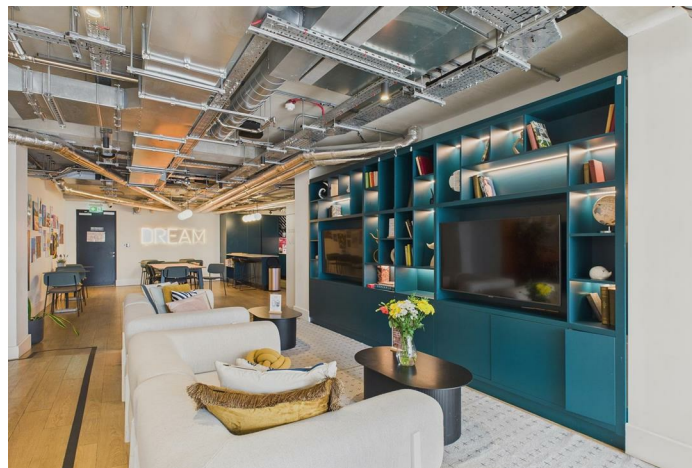
Fridman & Merevale House has been extensively refurbished to deliver a premium lifestyle offering: residents' gym, cinema room, co-working spaces, multiple lounges, concierge, and a quiet, secure environment that's hard to find at this price point in London.

One of the most exciting and fast-evolving neighbourhoods in the capital and this is one of its best addresses. Please note, winter gardens are only available on select units.

Description



Situation



Furnished

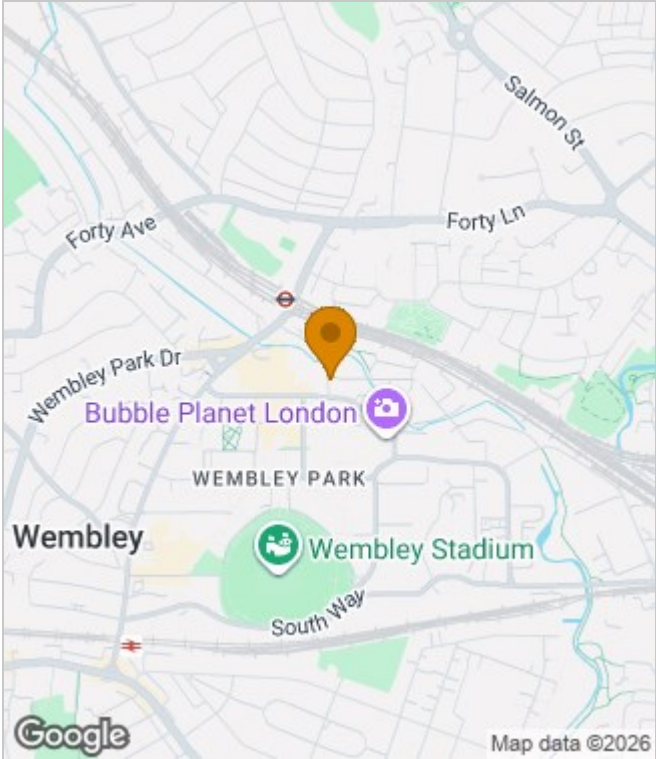
Council Tax Band: B

Available:

Floor Plans



Area Map



Energy Performance Graph

Energy Efficiency Rating		Current	Potential
Very energy efficient - lower running costs			
(92 plus) A			
(81-91) B		82	82
(69-80) C			
(55-68) D			
(39-54) E			
(21-38) F			
(1-20) G			
Not energy efficient - higher running costs			
England & Wales	EU Directive 2002/91/EC		

These particulars, whilst believed to be accurate are set out as a general outline only for guidance and do not constitute any part of an offer or contract. Intending purchasers should not rely on them as statements of representation of fact, but must satisfy themselves by inspection or otherwise as to their accuracy. No person in this firm's employment has the authority to make or give any representation or warranty in respect of the property.